

C

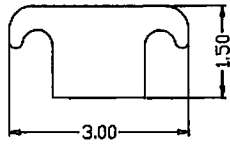
醫療器材

医療器材

Medical Instrument

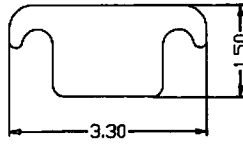
C1

Materi: SUS 316F
AREA: 3.01
DWG NO. 1CF-1530



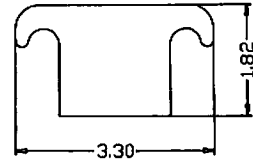
TLM NO. 683-2

Materi: SUS 316F
AREA: 3.44
DWG NO. 1CF-1533



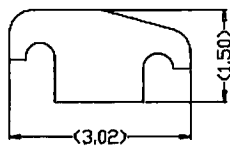
TLM NO. 683

Materi: SUS 316F
AREA: 4.05
DWG NO. 1CF-18233



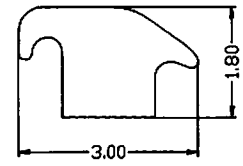
TLM NO. 683-1

Materi: PAT-51
AREA: 2.86
DWG NO. 1CT-14530



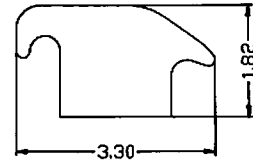
TLM NO. 685-2-C

Materi: SUS 631
AREA: 3.47
DWG NO. 1CJ-1830



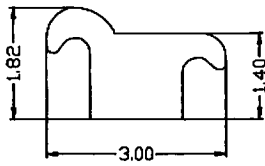
TLM NO. 685

Materi: SUS 316F
AREA: 4.05
DWG NO. 1CF-18233J



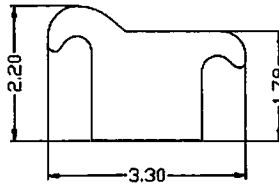
TLM NO. 685-1

Materi: SUS 631
AREA: 2.98
DWG NO. 1CJ-18230



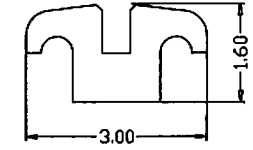
TLM NO. 684

Materi: SUS 631
AREA: 4.12
DWG NO. 1CJ-2233/1CF-2233



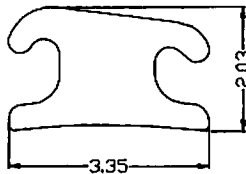
TLM NO. 684-1

Materi: SP-700
AREA: 2.72
DWG NO. 1CT-1630



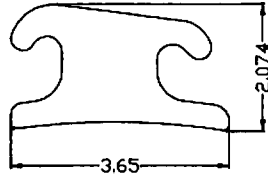
TLM NO. 683-3-C

Materi: SUS 316L+F
AREA: 4.54
DWG NO. 1CLF-203335



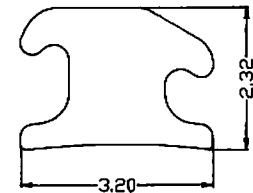
TLM NO. 683-6-C

Materi: SUS 316L+F
AREA: 4.66
DWG NO. 1CLF-203365



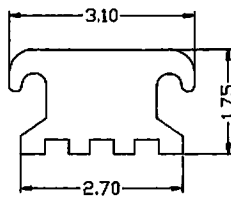
TLM NO. 683-4-C

Materi: SUS 316L+F
AREA: 5.25
DWG NO. 1CLF-23332

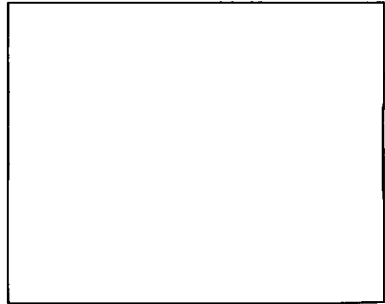
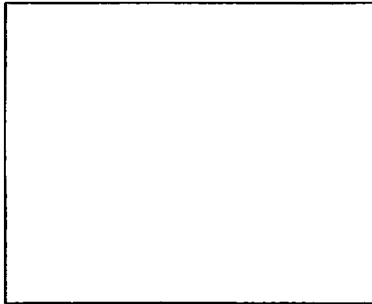


TLM NO. 683-5-C

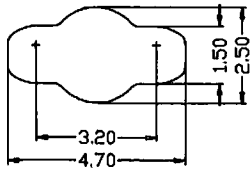
Materi: SUS 316L+F
AREA: 3.91
DWG NO. 1CF-17531



TLM NO. 686

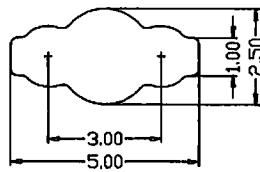


Material: SUS 303
AREA: 8.14
DWG NO. ICA-2547



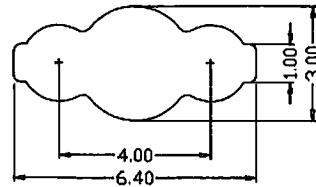
TLM NO. 643-3

Material: SUS 316F
AREA: 8.42
DWG NO. ICF-2550A



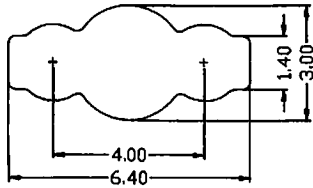
TLM NO. 643-4

Material: SUS 316F
AREA: 12.86
DWG NO. ICF-3064



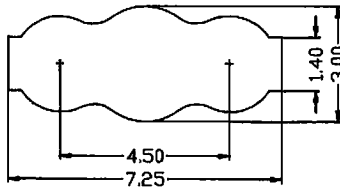
TLM NO. 680

Material: SUS 316F
AREA: 13.17
DWG NO. ICF-301464/ICA-301464



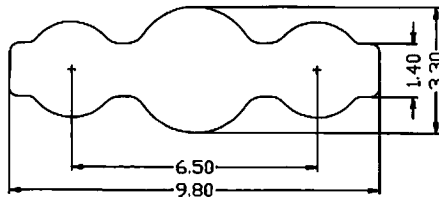
TLM NO. 643-2

Material: SUS 316F
AREA: 16.65
DWG NO. ICF-30725



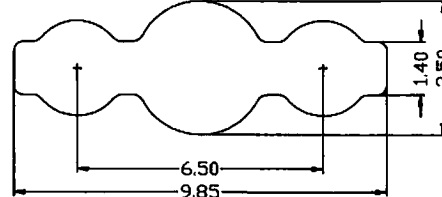
TLM NO. 680-1

Material: SUS 303
AREA: 21.03
DWG NO. ICA-3398

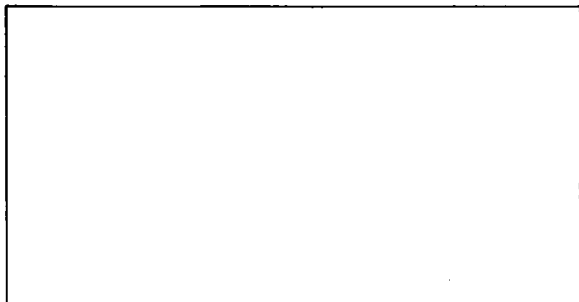
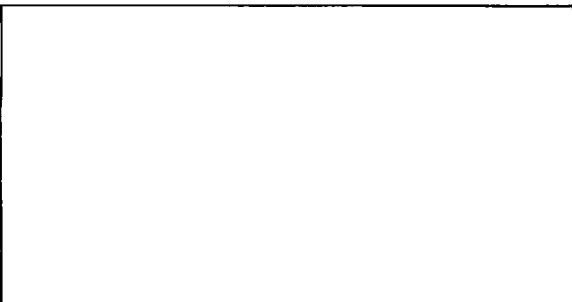
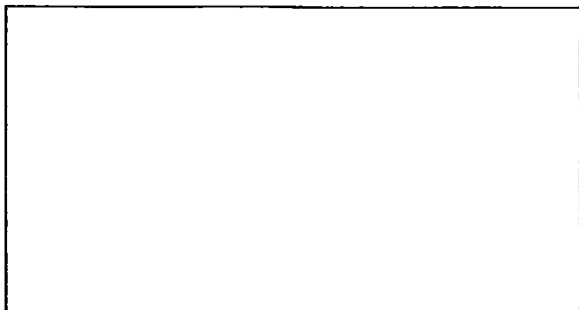
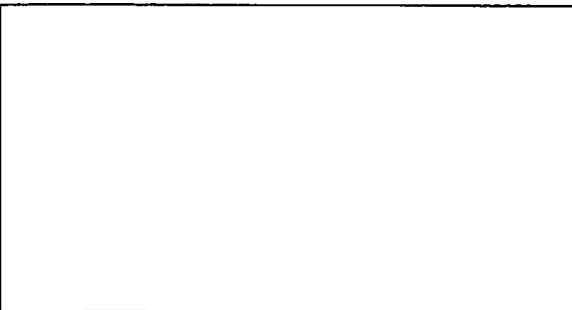


TLM NO. 643

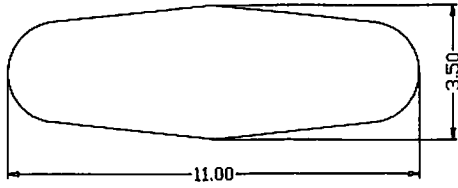
Material: SUS 316F
AREA: 21.85
DWG NO. ICF-35985



TLM NO. 643-1

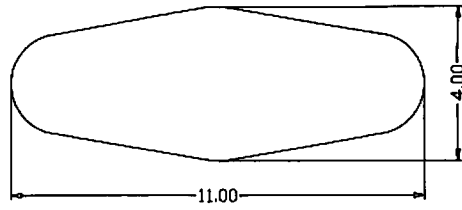


Material: SUS 316F
 AREA: 30.99
 DWG NO. 1CF-3511



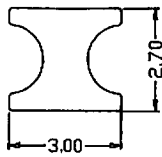
TLM NO. 682

Material: SUS 316L+F
 AREA: 33.42
 DWG NO. 1CLF-411



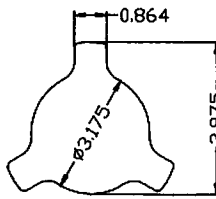
TLM NO. 682-1-C

Material: SUS 304
 AREA: 5.54
 DWG NO. 1CB-2730



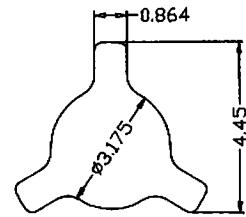
TLM NO. 943

Material: SUS 303
 AREA: 10.10
 DWG NO. 1CA-303975



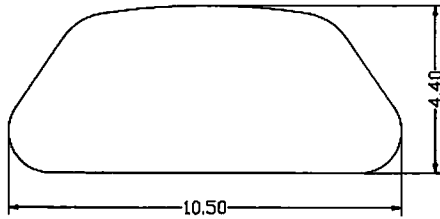
TLM NO. 687-1

Material: SUS 303
 AREA: 11.12
 DWG NO. 1CA-3445



TLM NO. 687

Material: SUS 316L+F
 AREA: 38.78
 DWG NO. 1CLF-44105



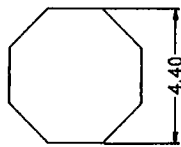
TLM NO. 944-1-C

Material: SUS 303
 AREA: 28.81
 DWG NO. 1CA-455102



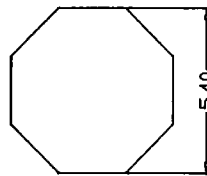
TLM NO. 6200

Material: SUS 304
 AREA: 16.04
 DWG NO. 1CB-OCT44/1CLF-OCT44



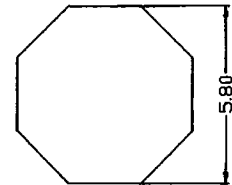
TLM NO. 007

Material: SUS 416
 AREA: 21.16
 DWG NO. 1CB-OCT54



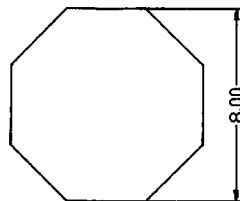
TLM NO. 007-1

Material: SUS 416
 AREA: 27.87
 DWG NO. 1CB-OCT58



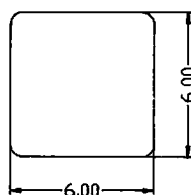
TLM NO. 007-2

Material: SUS 304
 AREA: 53.02
 DWG NO. 1CB-OCT80



TLM NO. 007-3

Material: SUS 304
 AREA: 35.79
 DWG NO. 1CB-66SQ



TLM NO. 401-22-C

