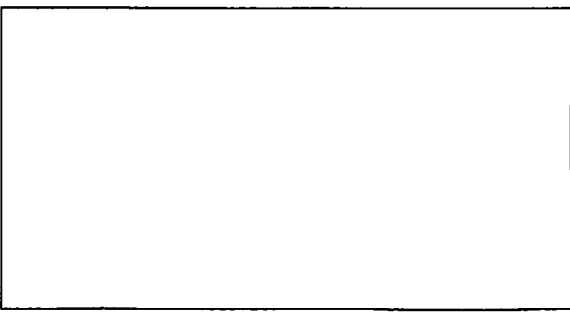
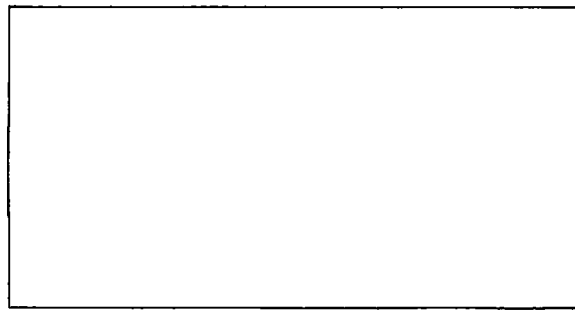
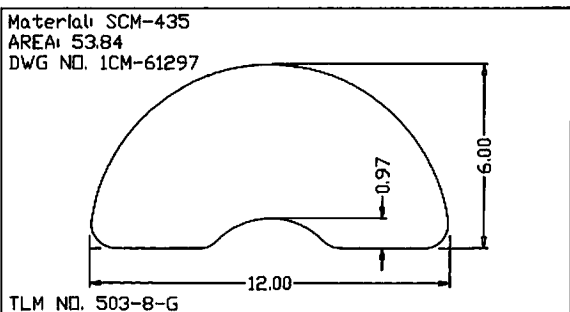
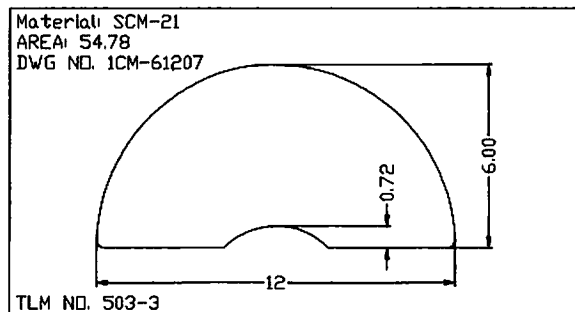
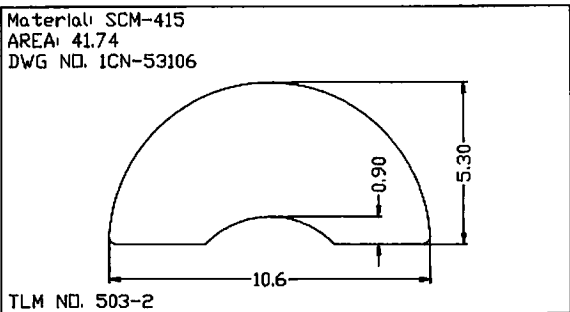
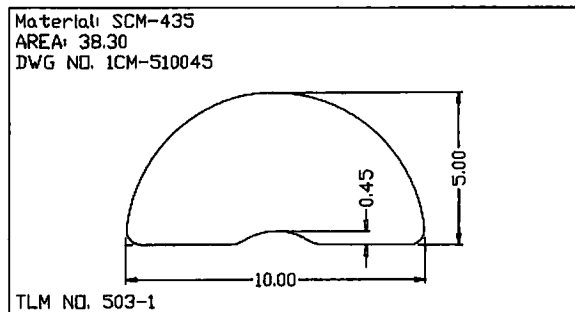
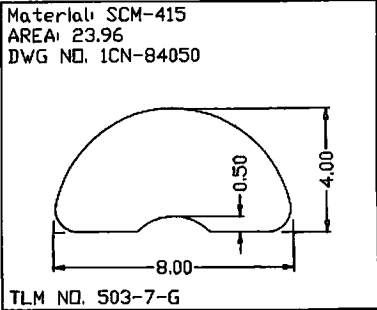
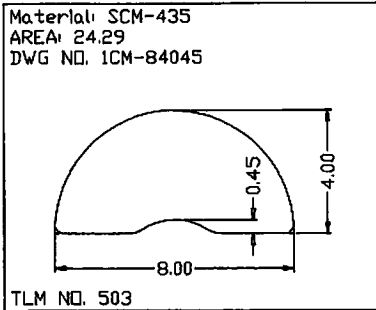
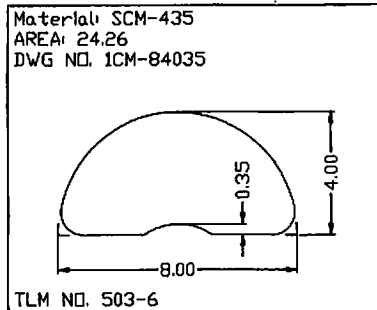
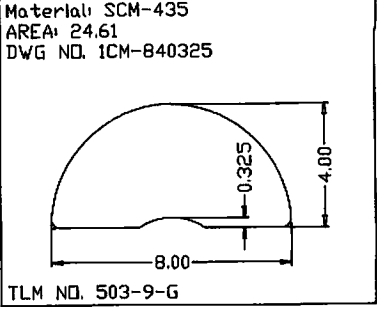
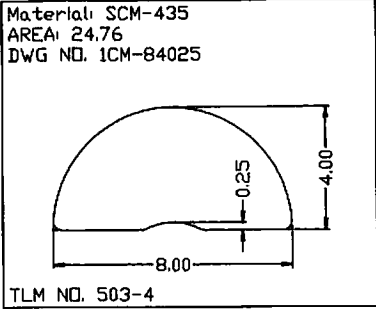
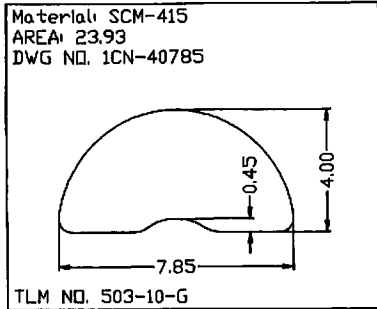


G

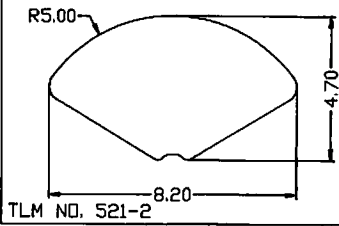
手動、氣動工具零件

手動工具及び空気圧縮工具部品

Parts For Hand Tool & Air-Compressed Tool

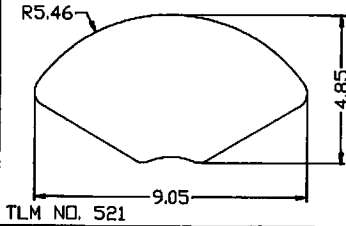


Material: SCM-435  
AREA: 25.64  
DWG NO. 1CM-4782



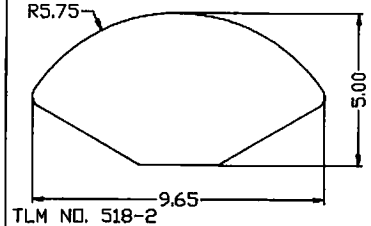
TLM NO. 521-2

Material: SCM-435/SCM-415  
AREA: 30.37  
DWG NO. 1CM-485905/1CN-485905



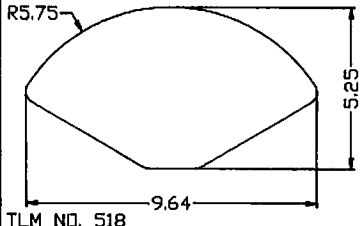
TLM NO. 521

Material: SCM-415  
AREA: 33.61  
DWG NO. 1CN-5096

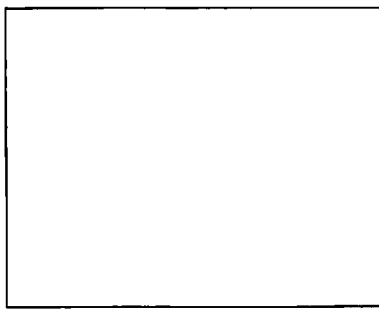
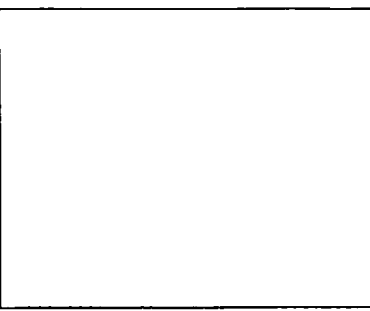
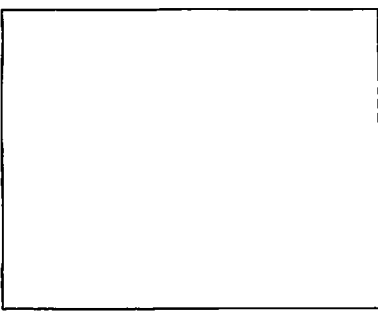
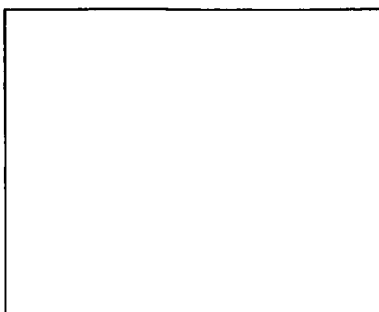
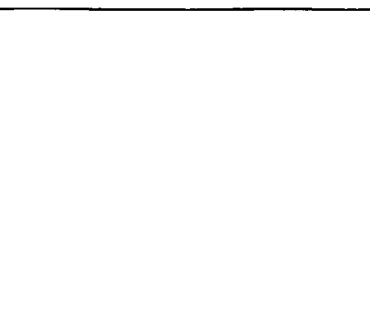
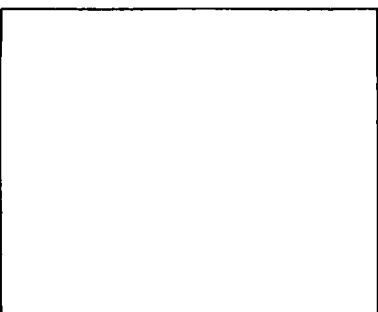
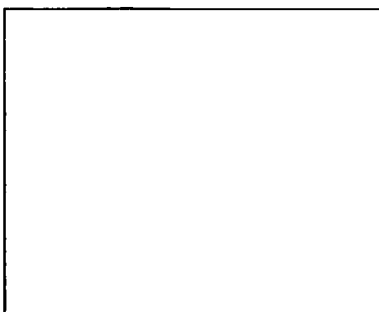
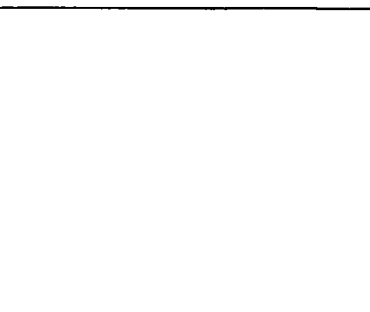
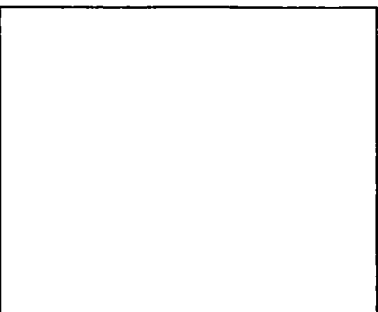
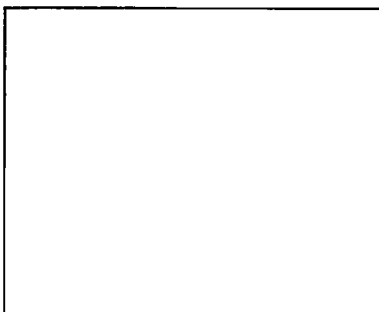
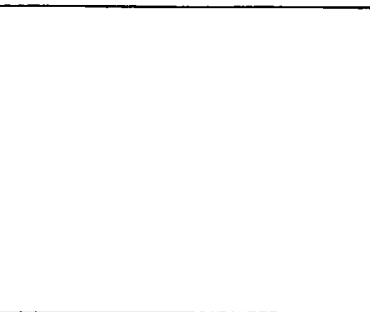


TLM NO. 518-2

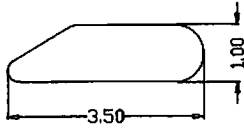
Material: SCM-440  
AREA: 34.11  
DWG NO. 1CM-525965



TLM NO. 518

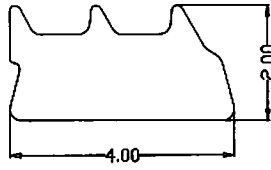


Material: AISI 1008  
AREA: 2.97  
DWG NO. 1CS-135



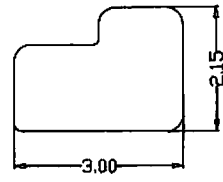
TLM NO. 523

Material: 1008K  
AREA: 6.08  
DWG NO. 1CS-24



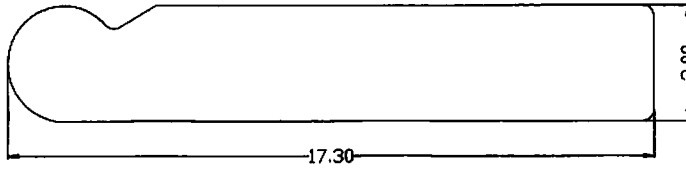
TLM NO. 522-1

Material: S60C  
AREA: 5.40  
DWG NO. 1CW-21530



TLM NO. 415-G

Material: SK-4  
AREA: 50.22  
DWG NO. 1CI-30173



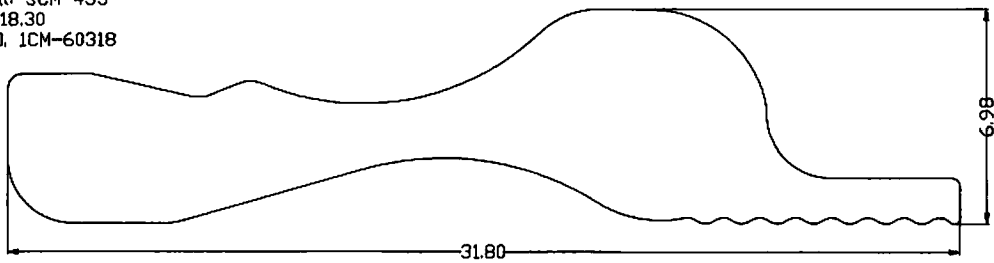
TLM NO. 725

Material: SCM-415  
AREA: 9.85  
DWG NO. 1CN-2762



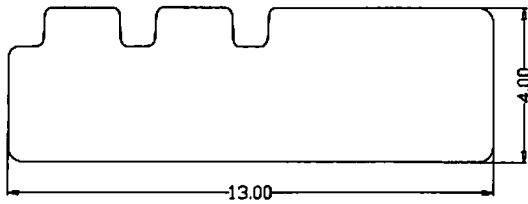
TLM NO. 210

Material: SCM-435  
AREA: 118.30  
DWG NO. 1CM-60318

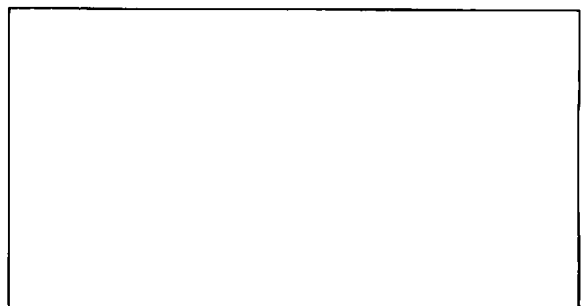
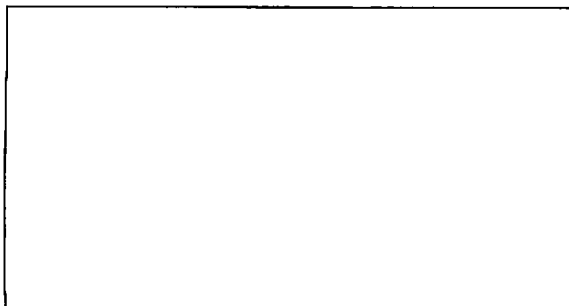
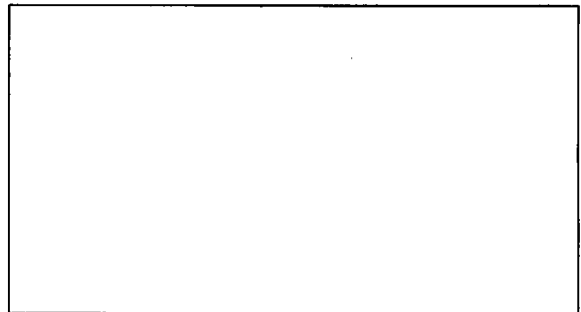


TLM NO. 531-G

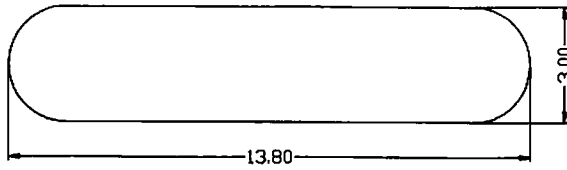
Material: S40C  
AREA: 49.00  
DWG NO. 1CV-413



TLM NO. 312

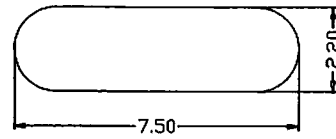


Material: 1008K  
 AREA: 39.47  
 DWG NO. 1CS-30138



TLM NO. 948-50

Material: 1008K  
 AREA: 15.46  
 DWG NO. 1CS-2275



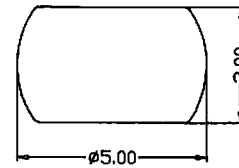
TLM NO. 948-35

Material: S60C  
 AREA: 10.92  
 DWG NO. 1CW-1310



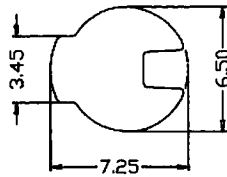
TLM NO. 524

Material: SUS 304  
 AREA: 14.04  
 DWG NO. 1CB-3050



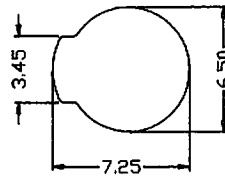
TLM NO. 736-18-G

Material: SCM-435/SCM-440  
 AREA: 31.28  
 DWG NO. 1CM-65725A



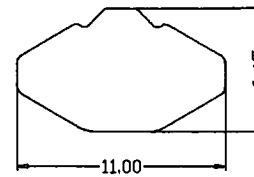
TLM NO. 951-1-G

Material: SCM-440  
 AREA: 35.82  
 DWG NO. 1CM-65725



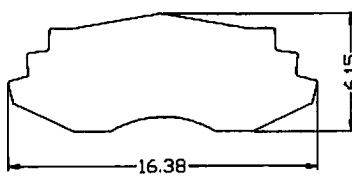
TLM NO. 951

Material: SCM-435  
 AREA: 50.42  
 DWG NO. 1CM-64511



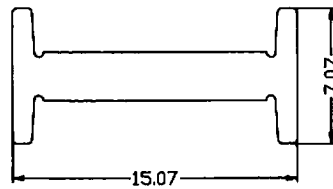
TLM NO. 520

Material: SCM-435  
 AREA: 75.00  
 DWG NO. 1CM-61163



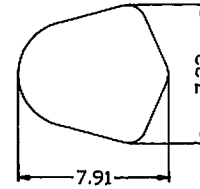
TLM NO. 937-1-G

Material: SCM-440/SCM-415  
 AREA: 47.01  
 DWG NO. 1CM-7071507/1CN-7071507



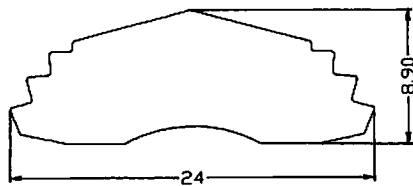
TLM NO. 116-G

Material: S60C  
 AREA: 41.75  
 DWG NO. 1CW-723791



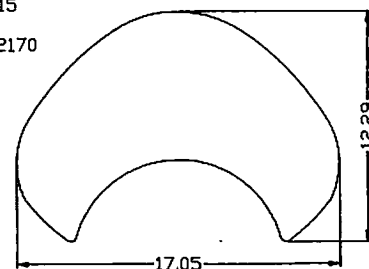
TLM NO. 017

Material: SCM-435  
 AREA: 150.46  
 DWG NO. 1CM-89240



TLM NO. 937

Material: SCM-415  
 AREA: 128.84  
 DWG NO. 1CN-122170



TLM NO. 416-G